



## Bridge Update

August 2023

Submitted by: Kari Giles

### Coming Soon

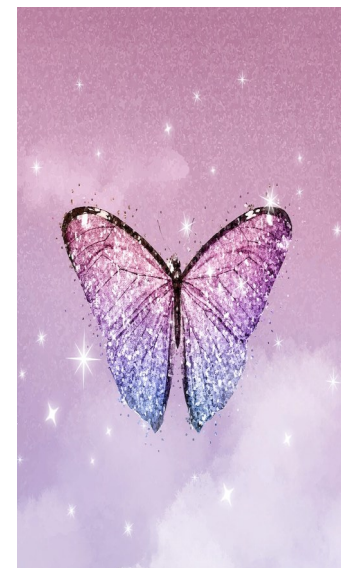
- If an INA is in “pending” status and saved by the trainee, and the trainee then updates their supervisor via the demographic screen, their supervisor will be updated on the INA as well. In addition, if a supervisor leaves the agency and the demographic screen defaults back to “select your supervisor”, the INA will also default back to “select your supervisor”.
- In the “Manage Users” screen, the “Reset Filters” switch will reset all fields, including the first and last name fields.

### For Further Assistance

- For anyone who would like to set up a one-on-one Bridge training via Microsoft Teams, please contact [BridgeHD@pitt.edu](mailto:BridgeHD@pitt.edu). This training can be for new liaisons or for anyone who may need a refresher.
- We would also love to hear any feedback, suggestions, and ideas you may have about Bridge via our online form at <http://forms.cwrc.pitt.edu/BridgeFeedback/>.
- If you have any technical issues or questions, please email the Bridge team at [BridgeHD@pitt.edu](mailto:BridgeHD@pitt.edu).

### Inside this Issue:

Bridge Update	1
New OE Webpage	2
Coming up - Child Welfare Workforce Development Month is September	2
Regional Team Contact Information	3



# New OE Webpage

*Submitted by: Wendy Unger*

After months of strategically pulling together resources and doing a much needed overhaul, we are happy to release the OE Webpage, [www.pacwrc.pitt.edu/OE-RT.htm](http://www.pacwrc.pitt.edu/OE-RT.htm). The new site includes an updated map to easily locate and contact your OE staff, more information about the OE process, testimonials from OE customers, and resources.

Contact your OE staff (using the new [CWRC Contact Map \(pitt.edu\)](http://www.pitt.edu/CWRC-Contact-Map)) for more information.



## Coming Up – Child Welfare Workforce Development Month is September!

*Submitted by: Andrea Merovich*

Child Welfare Workforce Development Month kicks off in September. It is an opportunity for child welfare professionals to celebrate their achievements and connect with colleagues, for child welfare leaders to focus on how to support and recognize their workforce, for social work students to learn about child welfare practice, and for social work programs and faculty to refresh the child welfare curriculum with the latest resources.

Find tons of resources, social media and marketing tools, event information, and more at the Child Welfare Workforce Development Month website: <https://ncwwi.org/workforce-development-month/>

Mark your calendars for these special events and happenings:

- September 11-15 – Child Welfare Worker Appreciation Week
- September 12 – Child Welfare Worker Recognition Event
  - \* Recognition is simple, yet powerful! NCWWI is seeking ‘thank you’ messages, video clips, and images for this year’s Child Welfare Worker Recognition Event. Fill out the form and make submissions by EOD August 31, then register to join and plan your celebration! Submission form:  
<https://lp.constantcontactpages.com/sv/mcX8Ctq/WDM2023>
- September 21 – Child Welfare Virtual Expo
- September 25 – The 4 C’s of Workforce Development: Culture, Competency, Capacity, & Community
- September 29 – (Re)Ignite Your Spark

Registration and information at [www.NCWWI.org/CWworkforce](http://www.NCWWI.org/CWworkforce).

## Regional Team Contact Information

Our local number is 717-795-9048

Our fax number is 717-795-8013

Registration and winter weather number 1-877-297-7488

Central	
<b>Nick Ranney</b> , <i>Regional Team Supervisor</i>	<a href="mailto:ner20@pitt.edu">ner20@pitt.edu</a>
<b>Mackenzie Seiler</b> , <i>Practice Improvement Specialist</i>	<a href="mailto:mas739@pitt.edu">mas739@pitt.edu</a>
<b>Christina Fatzinger</b> , <i>Practice Improvement Specialist</i>	<a href="mailto:cmf27@pitt.edu">cmf27@pitt.edu</a>
<b>Emily Patterson</b> , <i>Practice Improvement Specialist</i>	<a href="mailto:emily.patterson@pitt.edu">emily.patterson@pitt.edu</a>
<b>David Vactor</b> , <i>Practice Improvement Specialist</i>	<a href="mailto:djv20@pitt.edu">djv20@pitt.edu</a>
<b>Mike Danner</b> , <i>Resource Specialist</i>	<a href="mailto:mjd12@pitt.edu">mjd12@pitt.edu</a>
Northeast	
<b>Jody Price</b> , <i>Regional Team Supervisor</i>	<a href="mailto:jlp78@pitt.edu">jlp78@pitt.edu</a>
<b>Elyse Coldren-Baker</b> , <i>Practice Improvement Specialist</i>	<a href="mailto:elc195@pitt.edu">elc195@pitt.edu</a>
<b>Jill Ferraro</b> , <i>Practice Improvement Specialist</i>	<a href="mailto:jab462@pitt.edu">jab462@pitt.edu</a>
<b>Jayne Toczylousky</b> , <i>Practice Improvement Specialist</i>	<a href="mailto:jat115@pitt.edu">jat115@pitt.edu</a>
<b>Maricar Williams</b> , <i>Resource Specialist</i>	<a href="mailto:man86@pitt.edu">man86@pitt.edu</a>
Southeast	
<b>Russell Cripps</b> , <i>Regional Team Supervisor</i>	<a href="mailto:ruc17@pitt.edu">ruc17@pitt.edu</a>
<b>Angela Plantz</b> , <i>Practice Improvement Specialist</i>	<a href="mailto:anp202@pitt.edu">anp202@pitt.edu</a>
<b>Colleen Cox</b> , <i>Practice Improvement Specialist</i>	<a href="mailto:coc31@pitt.edu">coc31@pitt.edu</a>
<b>Eliza White</b> , <i>Practice Improvement Specialist</i>	<a href="mailto:eaw81@pitt.edu">eaw81@pitt.edu</a>
<b>Jessica Wittman</b> , <i>Resource Specialist</i>	<a href="mailto:jms137@pitt.edu">jms137@pitt.edu</a>
Western	
<b>Tammie Weaver</b> , <i>Regional Team Supervisor</i>	<a href="mailto:tmw89@pitt.edu">tmw89@pitt.edu</a>
<b>Adam Garrity</b> , <i>Practice Improvement Specialist</i>	<a href="mailto:adg105@pitt.edu">adg105@pitt.edu</a>
<b>Michael McClure</b> , <i>Practice Improvement Specialist</i>	<a href="mailto:mjm298@pitt.edu">mjm298@pitt.edu</a>
<b>Jennifer Caruso</b> , <i>Practice Improvement Specialist</i>	<a href="mailto:jcar@pitt.edu">jcar@pitt.edu</a>
<b>Cassie Kreckel</b> , <i>Practice Improvement Specialist</i>	<a href="mailto:cek83@pitt.edu">cek83@pitt.edu</a>
<b>Veronica King</b> , <i>Resource Specialist</i>	<a href="mailto:vek21@pitt.edu">vek21@pitt.edu</a>

